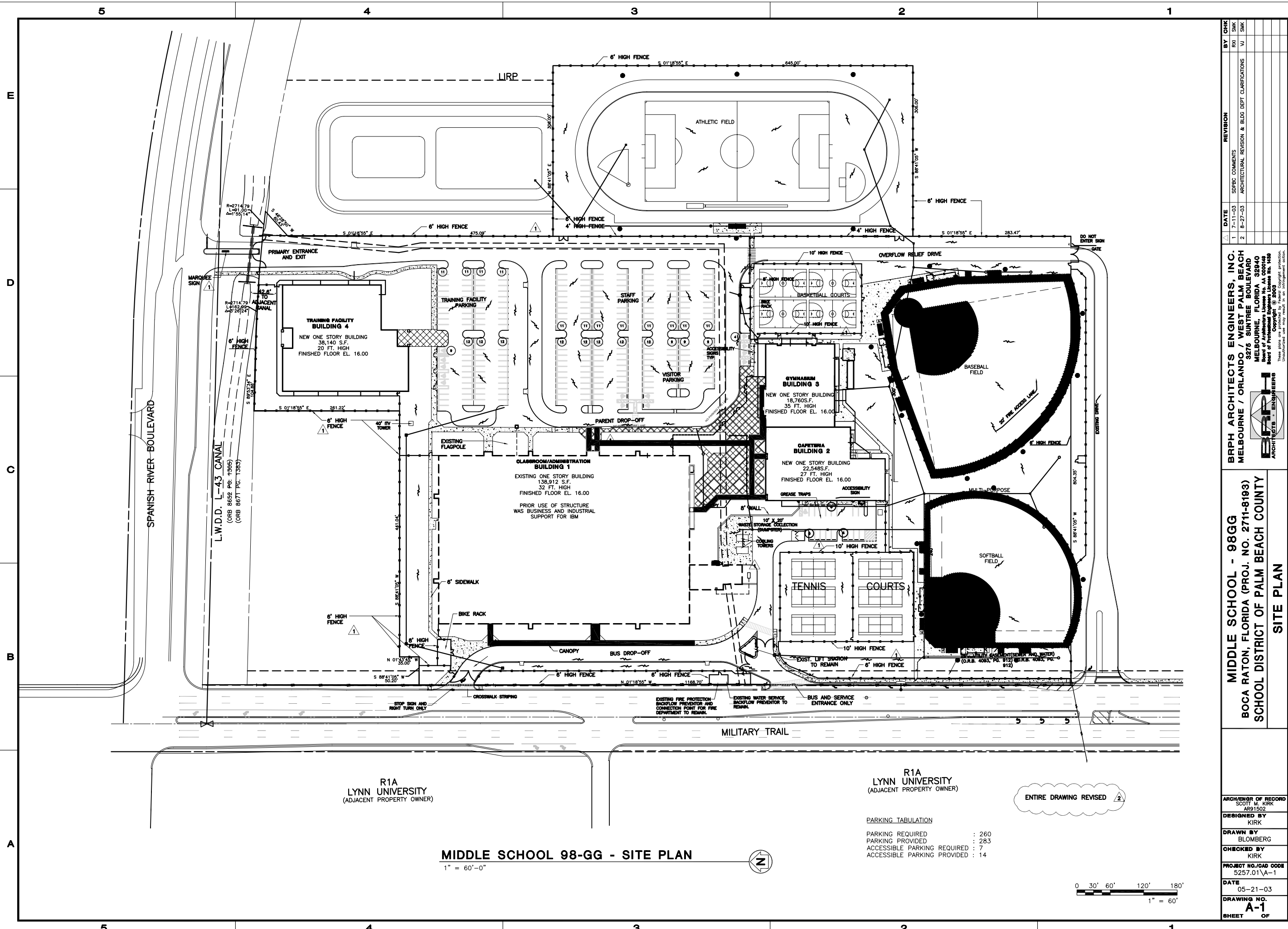


P:\5257.02\current\A-1.dwg, 04/15/2005 10:20:48 AM, rxi



MIDDLE SCHOOL 98-GG - SITE PLAN

1" = 60'-0"

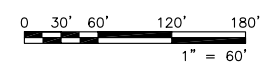


R1A
LYNN UNIVERSITY
(ADJACENT PROPERTY OWNER)

ENTIRE DRAWING REVISED 2

PARKING TABULATION

PARKING REQUIRED	: 260
PARKING PROVIDED	: 283
ACCESSIBLE PARKING REQUIRED	: 7
ACCESSIBLE PARKING PROVIDED	: 14



DATE	REVISION	BY	CHK
7-11-03	SPBC COMMENTS	RXI	SMK
8-27-03	ARCHITECTURAL REVISION & BLDG DEPT CLARIFICATIONS	VU	SMK

BRPH ARCHITECTS ENGINEERS, INC.
 MELBOURNE / ORLANDO / WEST PALM BEACH
 3276 SUNTIRE BOULEVARD
 MELBOURNE, FLORIDA 32940
 Board of Architecture License No. 44000
 Board of Professional Engineers License No. 1148
 Copyright © 2003
 Unauthorized use or reproduction of any part of this drawing is prohibited.

MIDDLE SCHOOL - 98GG
 BOCA RATON, FLORIDA (PROJ. NO. 2711-8193)
 SCHOOL DISTRICT OF PALM BEACH COUNTY
SITE PLAN

ARCHITECT OF RECORD
 SCOTT M. KIRK
 AR91502
 DESIGNED BY
 KIRK
 DRAWN BY
 BLOMBERG
 CHECKED BY
 KIRK

PROJECT NO./CAD CODE
 5257.01\A-1

DATE
 05-21-03

DRAWING NO.
A-1

SHEET
 OF